

Технические характеристики

По вопросам продаж и поддержки обращайтесь:

Алматы (7273)495-231
Архангельск (8182)63-90-72
Астрахань (8512)99-46-04
Барнаул (3852)73-04-60
Белгород (4722)40-23-64
Брянск (4832)59-03-52
Владивосток (423)249-28-31
Волгоград (844)278-03-48
Вологда (8172)26-41-59
Воронеж (473)204-51-73
Екатеринбург (343)384-55-89
Иваново (4932)77-34-06
Ижевск (3412)26-03-58
Иркутск (395)279-98-46
Россия (495)268-04-70

Казань (843)206-01-48
Калининград (4012)72-03-81
Калуга (4842)92-23-67
Кемерово (3842)65-04-62
Киров (8332)68-02-04
Краснодар (861)203-40-90
Красноярск (391)204-63-61
Курск (4712)77-13-04
Липецк (4742)52-20-81
Магнитогорск (3519)55-03-13
Москва (495)268-04-70
Мурманск (8152)59-64-93
Набережные Челны (8552)20-53-41
Нижний Новгород (831)429-08-12
Киргизия (996)312-96-26-47

Новокузнецк (3843)20-46-81
Новосибирск (383)227-86-73
Омск (3812)21-46-40
Орел (4862)44-53-42
Оренбург (3532)37-68-04
Пенза (8412)22-31-16
Пермь (342)205-81-47
Ростов-на-Дону (863)308-18-15
Рязань (4912)46-61-64
Самара (846)206-03-16
Санкт-Петербург (812)309-46-40
Саратов (845)249-38-78
Севастополь (8692)22-31-93
Симферополь (3652)67-13-56
Казахстан (7172)727-132

Смоленск (4812)29-41-54
Сочи (862)225-72-31
Ставрополь (8652)20-65-13
Сургут (3462)77-98-35
Тверь (4822)63-31-35
Томск (3822)98-41-53
Тула (4872)74-02-29
Тюмень (3452)66-21-18
Ульяновск (8422)24-23-59
Уфа (347)229-48-12
Хабаровск (4212)92-98-04
Челябинск (351)202-03-61
Череповец (8202)49-02-64
Ярославль (4852)69-52-93



Stem Materials: SS304/SS316

Introduction

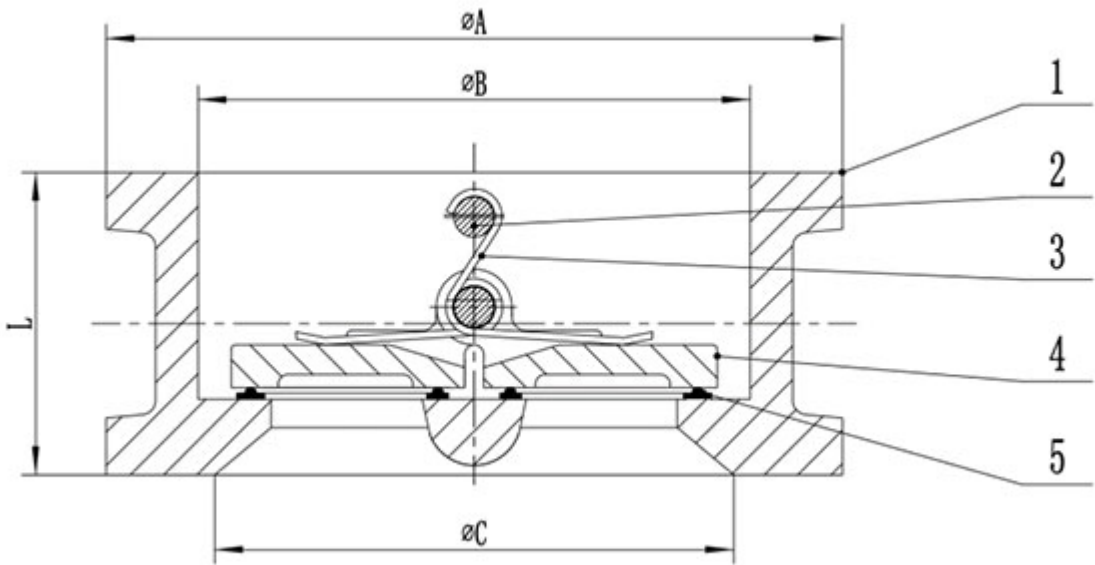
Suitable temperature : - 20 ~ 120 °C

Application field : Water supply and drainage, water treatment, water conservancy projects, etc.

Product advantages:

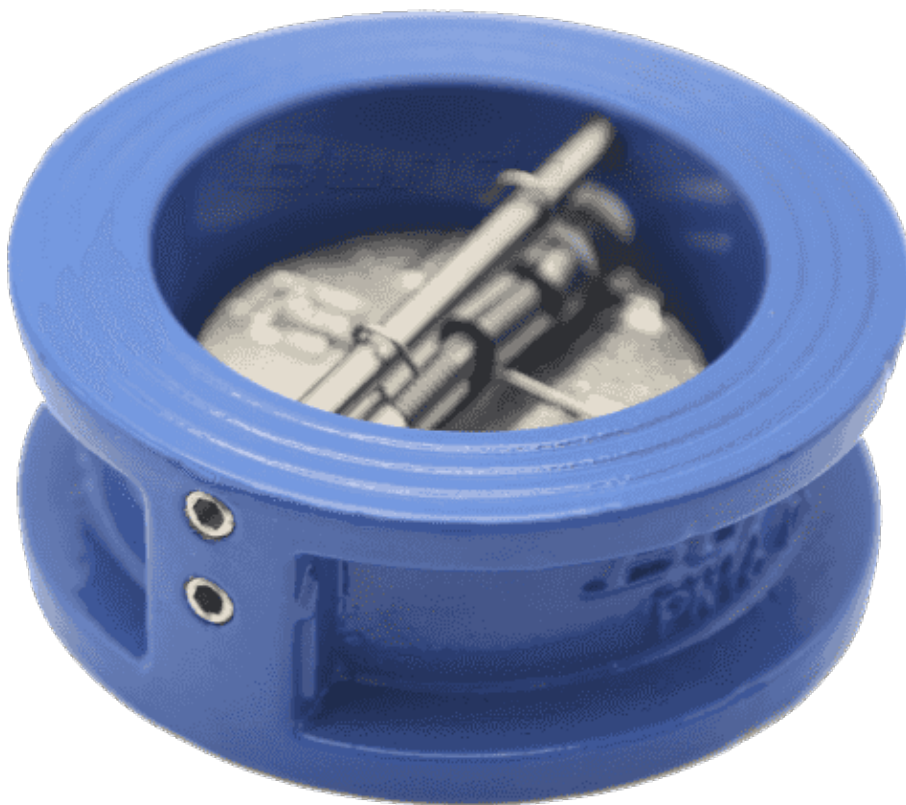
- 1.The sealing surface is smooth and smooth
- 2.Butterfly plate, valve body sealing surface all through grinding, smoothness and flatness are effectively guaranteed.
- 3.Static pressure zero leakage
Each valve is pressure tested to ensure that all products can achieve static pressure zero leakage.
- 4.The rubber inside the valve body is not easy to fall off
The rubber inside the valve body adopts advanced vulcanization technology to ensure the bonding strength between the rubber and the valve body is greater than 1.732mpa, which can effectively avoid the valve seat falling off in the process of use.

Parameters



Parts	1	2.00	3.00	4	5
Name	Body	Stem	Spring	Disc	Seat
Material	DI	SS304	SS304	SS304	EPDM
Size		L	ΦA	ΦB	ΦC
DN	NPS (inch)				
50	2"	43	101	60.5	57
65	2 1/2"	46	118	73.5	70

80	3"	64	132	89	86
100	4"	64	162	114.5	106.5
125	5"	70	193	141.5	120
150	6"	76	219	168	156.5
200	8"	89	272	219	210
250	10"	114	328	265	265
300	12"	114	378	310	300



Ductile Iron Check Valve

Size Range: DN50-DN300

Pressure: PN16

Body Materials: Ductile Iron

Seat Materials: EPDM

Disc Materials: Ductile Iron

Stem Materials: 304

Introduction

Features:

Applicable medium : Water and non-corrosive liquids

Suitable temperature : - 20 ~ 120 °C

Application field : Municipal construction, water conservancy projects, water supply and drainage, water treatment, etc

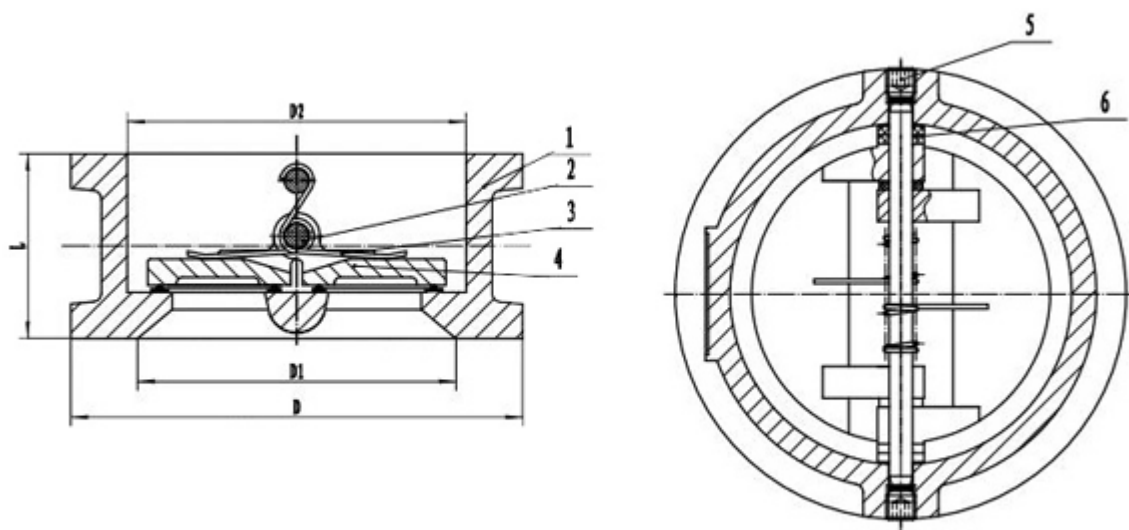
Product advantages:

1. The spring adopts ni-base alloy x-750, which has good corrosion resistance, seawater resistance and stable torque, and can provide material proof.
2. The spring is treated with solid solution, with high tensile strength of 910MPa, Brinell hardness HB350, high hardness and good fatigue resistance. After heat treatment, the residual deformation stress is eliminated, which greatly improves the service life of the spring.
3. Rubber is treated with special process to avoid rubber aging after high-temperature spraying and give full play to rubber performance.
4. The valve body adopts the casting process of production line, with smooth appearance, clear casting, high dimensional accuracy and guaranteed delivery time.
5. The mechanical properties of the main material fully meet the qt450-10 standard, and the spheroidization rate can reach level 3.
6. The valve design fully conforms to the JB/T8937 standard, with large body shape, heavy weight, standard wall thickness and ensuring pressure.
7. The valve shaft is made of 304 material to prevent rust and corrosion.
8. The sealing cover of butterfly plate and valve body shall be ground to ensure its smoothness and smoothness, ensure sealing of disc and valve body, and the sealing cover of valve shall not leak when no pressure is applied. All products can achieve static pressure 0 leakage.
9. The inner cavity rubber of valve body adopts advanced vulcanization process to ensure that the binding strength of rubber and valve body is greater than 1.732mpa, effectively avoiding the shedding of seats in the service process.
10. The sealing cover adopts the wire seal, which improves the seal reliability.
11. Processing with special equipment to ensure concentricity and accuracy.
12. The axle hole adopts special sealing structure, and the sealing is reliable.
13. Built-in label design to prevent collision and scratching of the label.
14. Each valve of Bundor with LOGO and production furnace number, each product can be traced back.
15. Use heat shrink film and carton packing, the packaging is beautiful, prevent product knock.
16. Ultrasonic cleaning of each valve should be carried out, so as to prevent contamination and particulate impurities from remaining in the body, ensure cleanliness of the valve and prevent contamination of the water in the pipeline by the valve itself.
17. The valve body is sprayed with epoxy resin plastic powder of world famous brand Aksu, which can be deposited thicker and have stronger adhesion after melt curing.

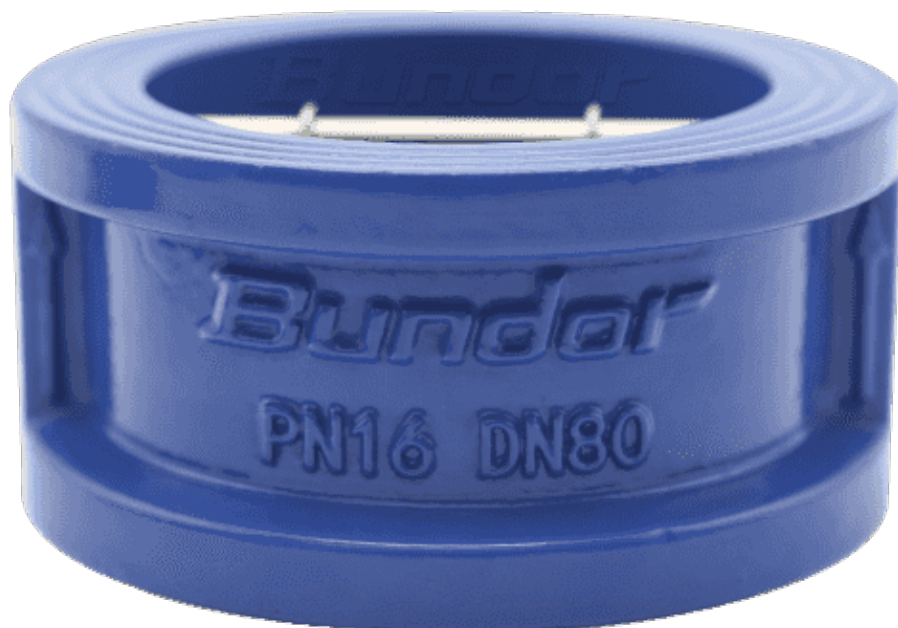
18. Each product of Bundor has its own QR code mark from the part to the finished product, and its unique ID ID number. The production process can be automatically checked through the qr code, so that the product can be traced.

19. The products under the brand of Bundor are insured by the Pacific insurance company with the quality of 10 million, and the warranty lasts for 2 years. If the product is damaged within two years, the company shall compensate for the loss unconditionally due to the quality problem of the product itself.

Parameters



DN	NPS	L±1.5	D	D1	D2
50	2"	43	101	58	65
65	2 1/2"	46	118	75	80
80	3"	64	132	85	94
100	4"	64	157	105	117
125	5"	70	186	125	145
150	6"	76	213	165	170
200	8"	89	272	215	224
250	10"	114	328	260	265
300	12"	114	378	300	310



Dual Disc Check Valve

Size Range: DN50-DN300

Pressure: PN16

Body Materials: Ductile Iron

Seat Materials: EPDM

Disc Materials: Ductile Iron

Stem Materials: 304

Introduction

Features:

Applicable medium : Water and non-corrosive liquids

Suitable temperature : - 20 ~ 120 °C

Application field : Municipal construction, water conservancy projects, water supply and drainage, water treatment, etc

Product advantages:

1. The spring adopts ni-base alloy x-750, which has good corrosion resistance, seawater resistance and

stable torque, and can provide material proof.

2. The spring is treated with solid solution, with high tensile strength of 910MPa, brinell hardness HB350, high hardness and good fatigue resistance. After heat treatment, the residual deformation stress is eliminated, which greatly improves the service life of the spring.

3. Rubber is treated with special process to avoid rubber aging after high-temperature spraying and give full play to rubber performance.

4. The valve body adopts the casting process of production line, with smooth appearance, clear casting, high dimensional accuracy and guaranteed delivery time.

5. The mechanical properties of the main material fully meet the qt450-10 standard, and the spheroidization rate can reach level 3.

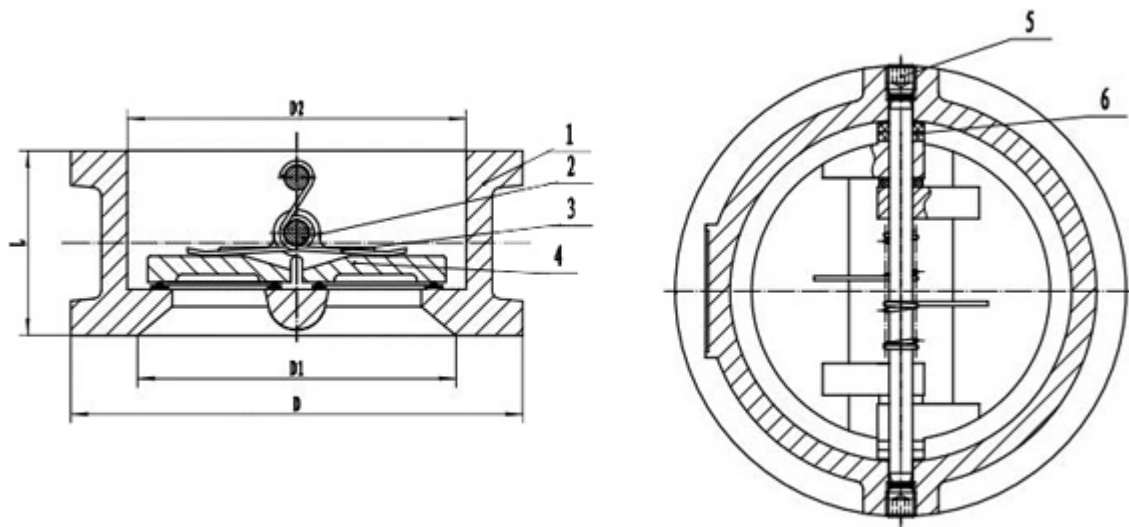
6. The valve design fully conforms to the JB/T8937 standard, with large body shape, heavy weight, standard wall thickness and ensuring pressure.

7. The valve shaft is made of 304 material to prevent rust and corrosion.

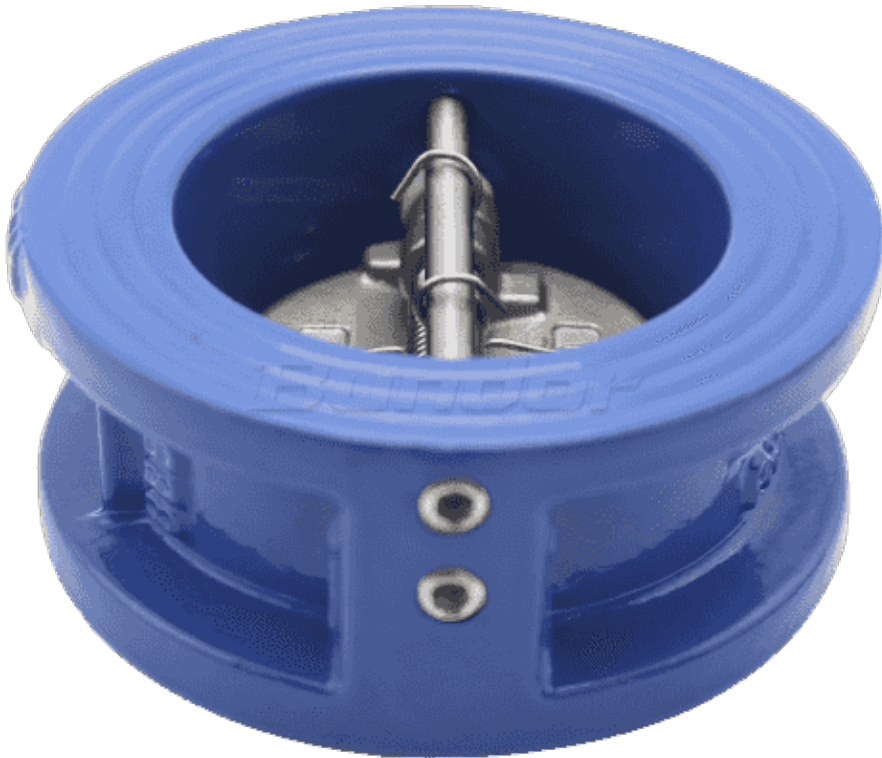
8. The sealing cover of butterfly plate and valve body shall be ground to ensure its smoothness and smoothness, ensure sealing of disc and valve body, and the sealing cover of valve shall not leak when no pressure is applied. All products can achieve static pressure 0 leakage.

9. The inner cavity rubber of valve body adopts advanced vulcanization process to ensure that the binding strength of rubber and valve body is greater than 1.732mpa, effectively avoiding the shedding of seats in the service process.

Parameters



DN	NPS	L±1.5	D	D1	D2
50	2"	43	101	58	65
65	2 1/2"	46	118	75	80
80	3"	64	132	85	94
100	4"	64	157	105	117
125	5"	70	186	125	145
150	6"	76	213	165	170
200	8"	89	272	215	224
250	10"	114	328	260	265
300	12"	114	378	300	310



Wafer Check Valve

Size Range: DN50-DN300

Pressure: PN16

Body Materials: Ductile Iron

Seat Materials: EPDM

Disc Materials: Ductile Iron

Stem Materials: 304

Introduction

Features:

Applicable medium : Water and non-corrosive liquids

Suitable temperature : - 20 ~ 120 °C

Application field : Municipal construction, water conservancy projects, water supply and drainage, water treatment, etc

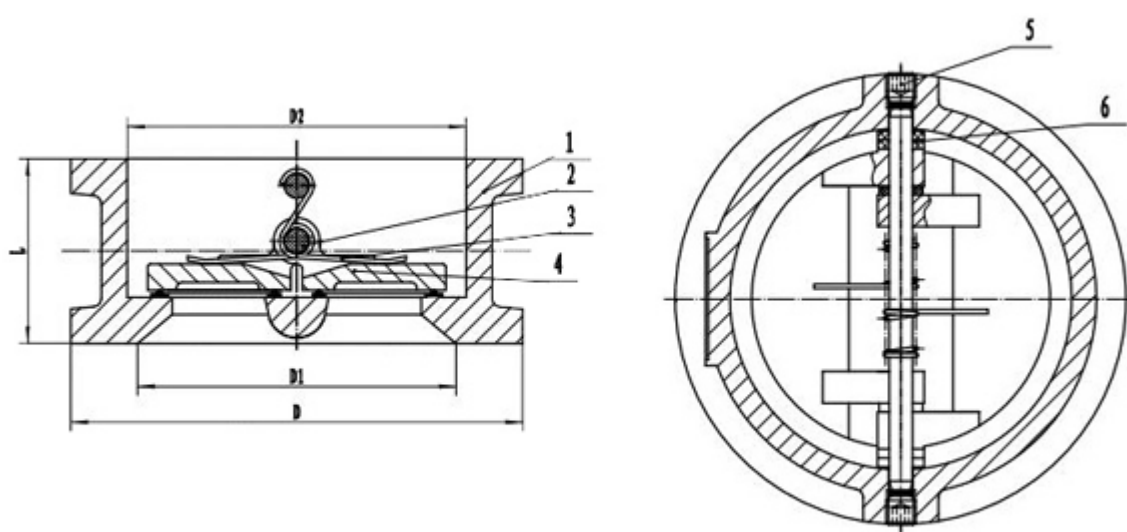
Product advantages:

1. The spring adopts ni-base alloy x-750, which has good corrosion resistance, seawater resistance and stable torque, and can provide material proof.
2. The spring is treated with solid solution, with high tensile strength of 910MPa, Brinell hardness HB350, high hardness and good fatigue resistance. After heat treatment, the residual deformation stress is eliminated, which greatly improves the service life of the spring.
3. Rubber is treated with special process to avoid rubber aging after high-temperature spraying and give full play to rubber performance.
4. The valve body adopts the casting process of production line, with smooth appearance, clear casting, high dimensional accuracy and guaranteed delivery time.
5. The mechanical properties of the main material fully meet the qt450-10 standard, and the spheroidization rate can reach level 3.
6. The valve design fully conforms to the JB/T8937 standard, with large body shape, heavy weight, standard wall thickness and ensuring pressure.
7. The valve shaft is made of 304 material to prevent rust and corrosion.
8. The sealing cover of butterfly plate and valve body shall be ground to ensure its smoothness and smoothness, ensure sealing of disc and valve body, and the sealing cover of valve shall not leak when no pressure is applied. All products can achieve static pressure 0 leakage.
9. The inner cavity rubber of valve body adopts advanced vulcanization process to ensure that the binding strength of rubber and valve body is greater than 1.732mpa, effectively avoiding the shedding of seats in the service process.
10. The sealing cover adopts the wire seal, which improves the seal reliability.
11. Processing with special equipment to ensure concentricity and accuracy.
12. The axle hole adopts special sealing structure, and the sealing is reliable.
13. Built-in label design to prevent collision and scratching of the label.
14. Each valve of Bundor with LOGO and production furnace number, each product can be traced back.
15. Use heat shrink film and carton packing, the packaging is beautiful, prevent product knock.
16. Ultrasonic cleaning of each valve should be carried out, so as to prevent contamination and particulate impurities from remaining in the body, ensure cleanliness of the valve and prevent contamination of the water in the pipeline by the valve itself.
17. The valve body is sprayed with epoxy resin plastic powder of world famous brand Aksu, which can be deposited thicker and have stronger adhesion after melt curing.

18. Each product of Bundor has its own QR code mark from the part to the finished product, and its unique ID number. The production process can be automatically checked through the qr code, so that the product can be traced.

19. The products under the brand of Bundor are insured by the Pacific insurance company with the quality of 10 million, and the warranty lasts for 2 years. If the product is damaged within two years, the company shall compensate for the loss unconditionally due to the quality problem of the product itself.

Parameters



DN	NPS	L±1.5	D	D1	D2
50	2"	43	101	58	65
65	2 1/2"	46	118	75	80
80	3"	64	132	85	94
100	4"	64	157	105	117
125	5"	70	186	125	145
150	6"	76	213	165	170
200	8"	89	272	215	224
250	10"	114	328	260	265
300	12"	114	378	300	310



SS304 Wafer Check Valve

Size Range: 2~24"(DN50~DN600)

Pressure: PN10, PN16, Class125

Body Materials: A105,304,316

Seat Materials: EPDM

Disc Materials: Ductile iron /SS304/ SS316

Stem Materials: 2cr13

Introduction

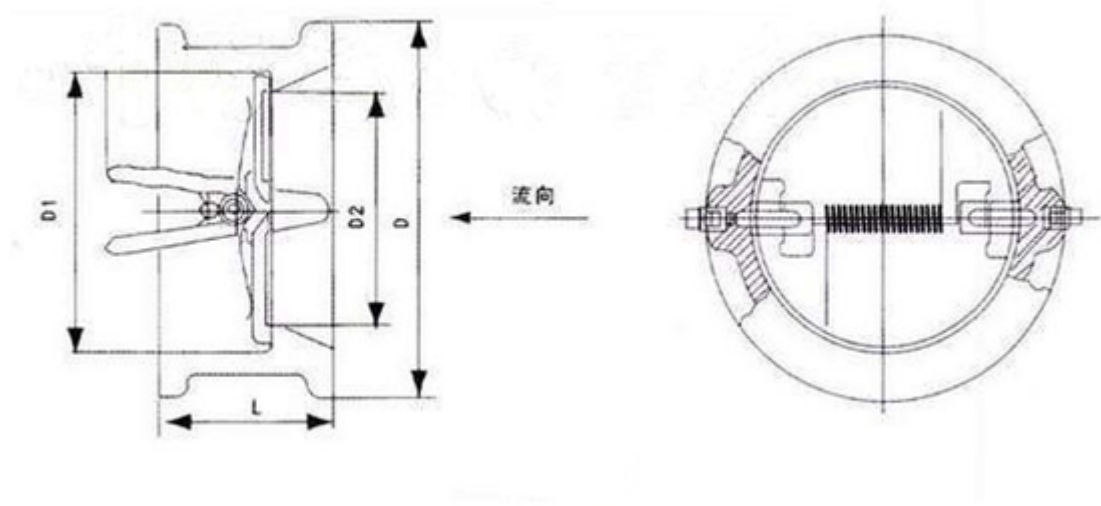
Product introduction

The wafer flange clamped butterfly check valve is a energy-save product.It is manufactured based the foreign advanced technology and in accordance with relative international standards.This product is featured by excellent retaining per-formance,high safety and reliability and low flow resistance.It is suitable for systems in the industries of petrochemical food processing,medicine,textile,paper-making,Water,supply,drainage,metallurgy,energy,and light industry,etc,used as a check valve in one way.

Featutes

- 1.Small in size,light in weight,compact in structure,easy in maintenance.
- 2.Two torsion springs are used exerting on each of the pair valve plates.Which close the plates quickly and automatically.
- 3.The quick-close action prevents the medium from flowing back and eliminates water-hammer effect.
- 4.This valve is short in length,so that it is rigid and easy to mount.
- 5.It is easy to install on pipeline which is laid horizontally or vertically.
- 6.This valve is tightly sealed without leakage under the pressure water test.
- 7.Safe and reliable in operation,high interference-resistance.

Parameters



Valve main parts and material

No	Parts Name	Materials							
	Body	304	LCB	LCC	WC6	WC9	CF8	CF8M	CF3 CF3M
	Stem	304	LCB	LCC	WC6	WC9	CF8	CF8M	CF3 CF3M
	Spring	304	LCB	LCC	WC6	WC9	CF8		

Gasket	150~600LB, STAINLESS STEEL WINDING GASKET								
Bolt	B7	L7M	L7M	B16	B16	B8	B8	B8	B8
Nut	2H	7M	7M	4	4	8	8	8	8

Standard

Standard			
Design&Ma nufacture	API 594	API6D	JB/TB937
Face to fac e	API594	DIN3202	JB/T8937
Pressre- Temperatur e	ASME B16. 34	DIN2401	GB/T9124
Pipe Flange	JB/71-90	JB/T9112-9 124	

PN Mpa	SIZE(mm)	L	D	D3	D2
1.6Mpa	40	60	96	46	41
	50	60	109	56	51
	65	67	129	73	65
	80	73	144	88	80
	100	73	164	108	102
	125	86	194	132	127
	150	98	220	160	152
	200	127	275	210	203
	250	146	332	266	254
	300	181	387	310	305
	350	184	447	355	350
	400	191	498	405	400
	450	203	558	455	450
	500	219	618	505	500
	600	222	732	605	600
	700	305	802	700	695
	800	305	912	800	796

900	368	1012	903	898
1000	432	1124	1055	1050
1200	524	1340	1200	1400



Stainless Steel Dual Plate Check Valve

Size Range: 2~24"(DN50~DN600)

Pressure: PN10, PN16, Class125

Body Materials: SS304,SS316

Seat Materials: NBR, EPDM

Disc Materials: CF8,CF8M

Stem Materials: SS416, SS304, SS316

Introduction

Adoptive Standards

Stainless steel Dual plate check valve:
Valve Design: API 609

Pressure Test: API 598

Flange end: ANSI B16.1 class125, BS4504 PN10/PN16, DIN2501 PN10/PN16

Standard Test

Stainless steel Dual plate check valve test:

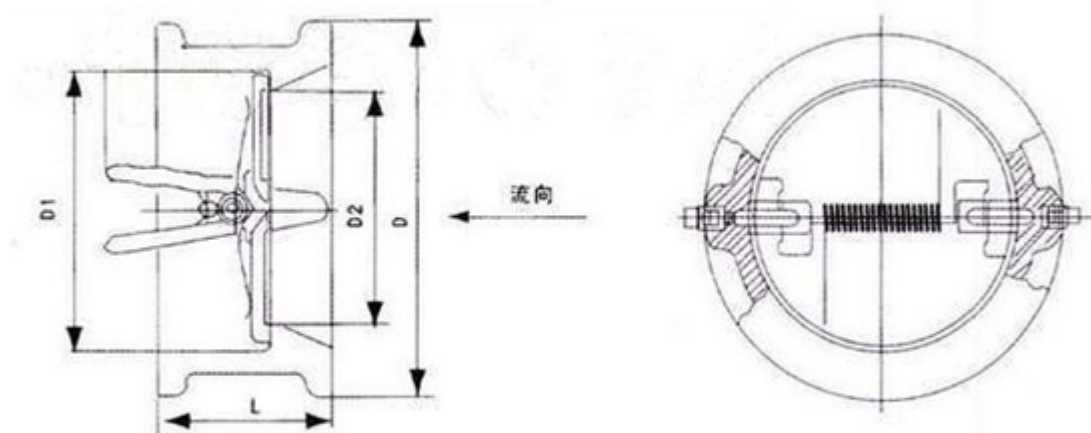
Body test 1.5 times the working pressure with water. This test is performed after valve assembly and with disc in half position open, it is called as a body hydro test.

Seat Test: 1.1 times the working pressure with water.

Function / Operation Test: At the time of final inspection, each valve and its actuator (Flow-Control Lever / Gear / Pneumatic Actuator), under goes a complete operating test (Open/Close). This test carried out without pressure and at ambient temperature. It ensures the correct operation of the valve / actuator assembly with accessories such as solenoid valve, limit switches, air filter regulator etc.

Special Test: On request, any other test can be carried out according to special instruction by client.

Parameters



SIZE	ϕA	ϕB	H
50	102	65	45
65	120	80	48
80	133	94	65
100	157	117	66
125	188	145	73

150	215	170	80
200	273	224	90
250	330	265	115
300	375	310	116
350	435	360	130
400	450	410	140



Swing Check Valve

Size Range: 2"-24"(DN50-DN600)

Pressure: PN16, PN25, CL125, CL150, CL250

Body Materials: Cast iron, ductile iron

Disc Materials: Cast iron, Ductile iron+Brass/Ductile +NBR

Stem Materials: Brass, SS

Introduction

Features :

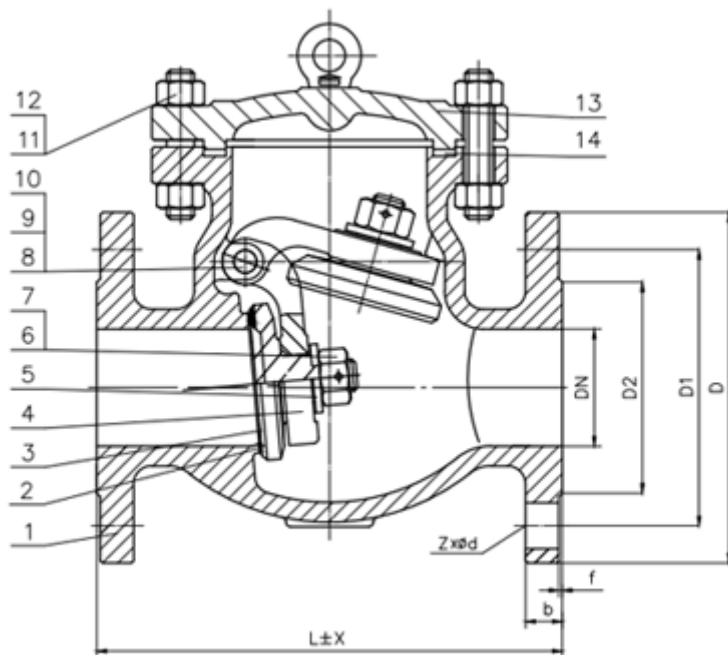
1. The valve flow is streamlined, low resistance.
2. The open-close part is control by medium itself to prevent backflow.
3. Seal the pair of pairs of advanced and reasonable, disc, valve seat sealing surface with iron-based alloy or Si Tai Li cobalt-based carbide welding, wear, high temperature, corrosion resistance, anti-scratch ability, long service life.

4.Products can be used in a variety of piping flange and flange standard and flange seal type, to meet a variety of engineering needs and user requirements.

5.Valve body variety, gasket can be based on actual conditions or user requirements reasonable matching, can be applied to a variety of pressure, temperature and medium conditions.

6.Bundor company specialized intentions since 1994, has a professional production, sales, research, after-sales team, is your strong backing of sales and use.

Parameters



DN	D	D1	D2	L	b	Z-d	H
Ø40	Ø127	Ø98.5	Ø73	165	15	4-Ø16	120
Ø50	Ø152	Ø120.5	Ø92	203	16	4-Ø19	137
Ø65	Ø178	Ø139.5	Ø105	216	17.5	4-Ø19	147
Ø80	Ø191	Ø152.5	Ø127	241	19	4-Ø19	159
Ø100	Ø229	Ø190.5	Ø157	292	24	8-Ø19	180
Ø125	Ø254	Ø216	Ø186	330	24	8-Ø22	203
Ø150	Ø279	Ø241.5	Ø216	356	25.5	8-Ø22	223
Ø200	Ø343	Ø298.5	Ø270	495	29	8-Ø22	258
Ø250	Ø406	Ø362	Ø324	622	30	12-Ø25	290

Ø300	Ø483	Ø432	Ø381	698	32	12-Ø25	325
Ø350	Ø533	Ø476	Ø413	787	35	12-Ø29	361
Ø400	Ø597	Ø540	Ø470	914	37	16-Ø29	388



Silent Check Valve

Size Range: DN40-DN400

Pressure: PN6/10/16、5/10K、CL150、Table D/E

Body Materials: Ductile Iron

Seat Materials: Brass

Disc Materials: Brass

Stem Materials: 410

Introduction

Product Features:

1. Bundor patent products, patent certification.

The product side flanges comply with national, German, Russian, American, British and Japanese standards and other domestic and international standards for multiple pressures, easy connection and wide adaptability, which can reduce the type of purchase and stock.

2.The thickness of valve body wall is up to standard.

The valve body wall thickness meets the requirement of GB 26640, the thickness is up to the standard, and the pressure strength is guaranteed.

3.The product has an independent identity to ensure traceability.

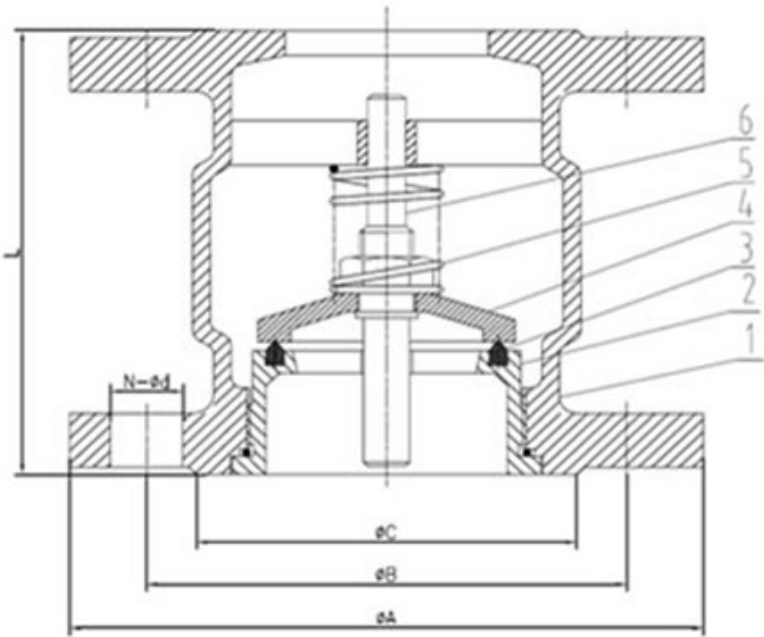
Each Bundor product has its own QR code mark, unique identification number, to ensure product traceability.

4.Provide material inspection report.

All Bundor products can provide the material inspection report of the main parts.

5.As for the products of Bundor, they are insured by the Pacific insurance company with the quality of 10 million yuan, and the warranty lasts for 2 years. If they are damaged within two years, they will be compensated for the product's quality problem without any conditions.

Parameters



1-Body	2-Seat	3-Seat ring	3-Disc	5-Spring	6-Stem
DI	Brass	EPDM	Brass	304	410
DN	NPS (inch)	ΦA	ΦB	ΦC	L
40	1 1/2"	145	110	84	100
50	2"	165	125	99	120
65	2 1/2"	185	145	118	136
80	3"	200	160	132	160

100	4"	220	180	156	180
125	5"	250	210	184	190
150	6"	285	240	211	208
200	8"	340	295	266	275
250	10"	395	350	319	325
300	12"	445	400	370	362
350	14"	505	460	429	533
400	16"	565	515	480	572



Stainless Steel Swing Check Valve

Size Range: 2"-24"(DN50-DN600)

Pressure: PN16, PN25, CL125, CL150, CL250

Body Materials: Stainless Steel

Disc Materials: Stainless Steel

Stem Materials: Stainless Steel

Introduction

Features :

1. Valve flow is streamlined with low resistance.
2. The opening and closing part is controlled by the medium itself to prevent backflow.
3. The sealing pair is advanced and reasonable. The sealing surface of the valve disc and the valve seat is

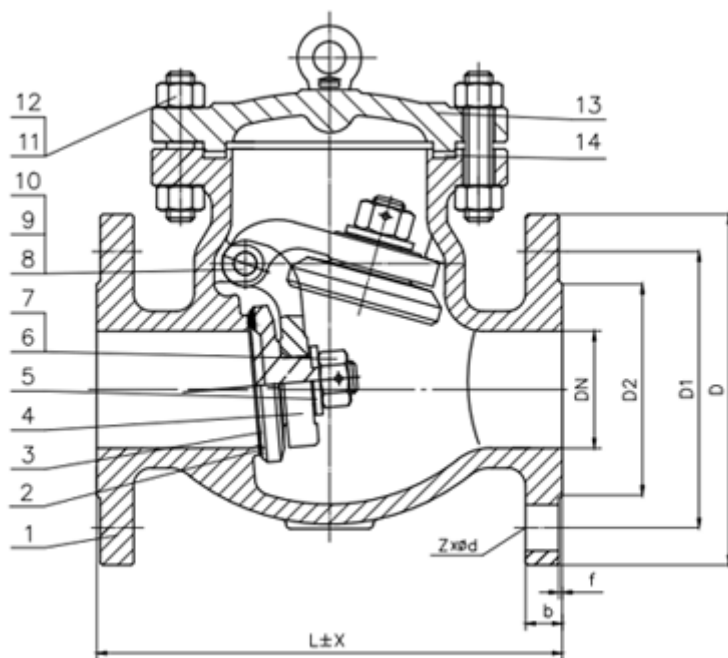
welded by iron-based alloy or silicon tartar cobalt-based carbide, so it has the advantages of wear resistance, high temperature resistance, corrosion resistance and scratch resistance. . And it has a long service life.

4. The product can be used in various pipe flange and flange standard and flange sealing types to meet various engineering needs and user requirements.

5. There are a wide variety of valve bodies. Gaskets can be reasonably matched to the actual situation or user requirements and can be applied to a variety of pressure, temperature and media conditions.

6. Since 1994, Bundor has been professionally dedicated to its professional production, sales, R&D and after-sales service teams. We are the strong backing for your sales and use.

Parameters



DN	D	D1	D2	L	b	Z-d	H
Ø40	Ø127	Ø98.5	Ø73	165	15	4-Ø16	120
Ø50	Ø152	Ø120.5	Ø92	203	16	4-Ø19	137
Ø65	Ø178	Ø139.5	Ø105	216	17.5	4-Ø19	147
Ø80	Ø191	Ø152.5	Ø127	241	19	4-Ø19	159
Ø100	Ø229	Ø190.5	Ø157	292	24	8-Ø19	180
Ø125	Ø254	Ø216	Ø186	330	24	8-Ø22	203
Ø150	Ø279	Ø241.5	Ø216	356	25.5	8-Ø22	223
Ø200	Ø343	Ø298.5	Ø270	495	29	8-Ø22	258
Ø250	Ø406	Ø362	Ø324	622	30	12-Ø25	290

Ø300	Ø483	Ø432	Ø381	698	32	12-Ø25	325
Ø350	Ø533	Ø476	Ø413	787	35	12-Ø29	361
Ø400	Ø597	Ø540	Ø470	914	37	16-Ø29	388



Stainless Steel Lift Check Valve

Size Range: DN15-DN80

Pressure: PN16

Body Materials: CF8/CF8M/CF3M

Introduction

FEATURES

Working temperature : -29°C ~ 180°C

Suitable medium : Water, steam, oil, etc

Application : Municipal construction,electricity, water supply and drainage,water treatment,oil

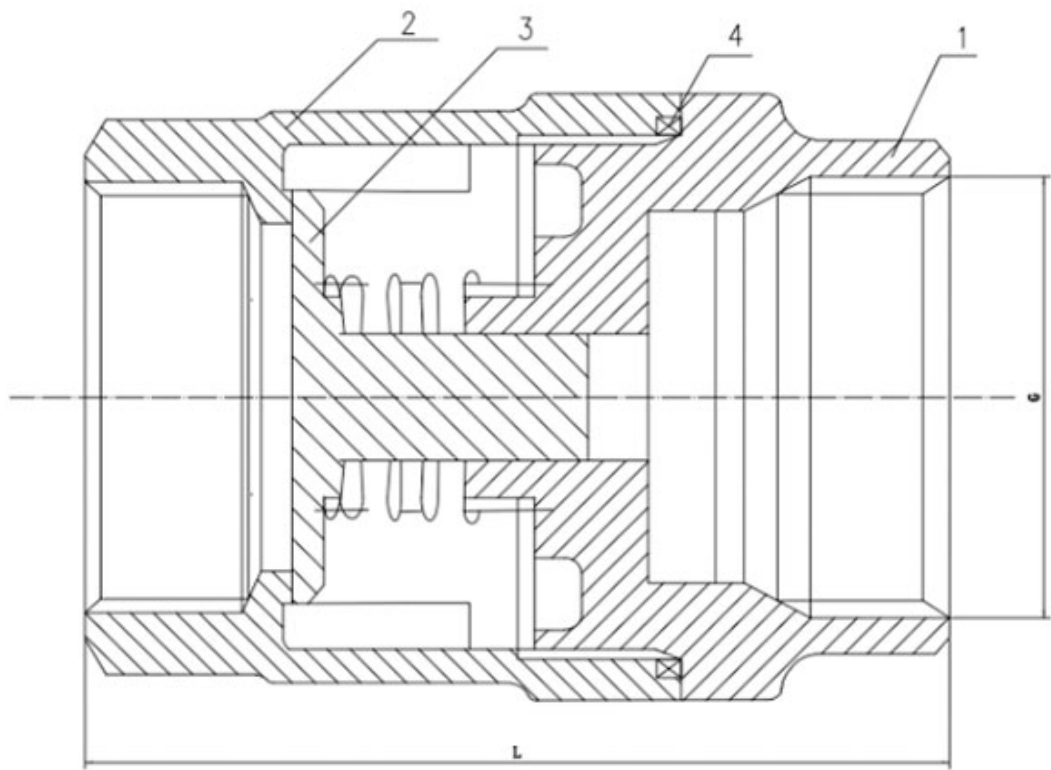
Product Identification:

Liftcheck valve is a regular valve. It is installed vertically, and its disc is positioned along the center to move up and down.

Product Advantages:

- 1. The main material meets the requirements of national regulations
- 2. All valve accessories are processed by CNC machine tools to ensure product accuracy;
- 3. After pressure test, the valve will be cleaned again, the anti-rust oil is sprayed.It is easier for long term storage. The cleanliness of the inner cavity meets the requirements of JB/T7748.
- 4. Each valve must be tested pressure as per national standards when leaving the factory, unqualified products will not be delivered.
- 5. Each valve adopts special thread blocking protection to prevent thread damage during transportation;
- 6. G thread, NPT thread, BSP and other customized threads can be provided according to customer needs.

Parameters



Parameter Information :

1. Executive standard :

Name	Design and manufacture	Standard of pressure test
Executive standard	GB/T 12235	GB/T 13927

2. Material of Main Parts:

Name	1-Body	2-Seat	3-Disc	4-Gasket
Material	CF8	CF8	304	PTFE

3. Dimensions :

Size	PN16	
DN	NPT	L
15	1/2"	59
20	3/4"	67
25	1"	78
32	1 1/4"	90
40	1 1/2"	99
50	2"	117
65	2 1/2"	148
80	3"	172



Check Valve with Counter Weight

Size Range: DN40-DN400

Pressure: PN16

Body Materials: DI

Seat Materials: Brass/SS/Rubber

Disc Materials: DI

Introduction

FEATURES

Working temperature : -10°C ~ 120°C

Suitable medium : Water,Oil,Gas

Application : Municipal construction, Power,Water supply, Petroleum industry

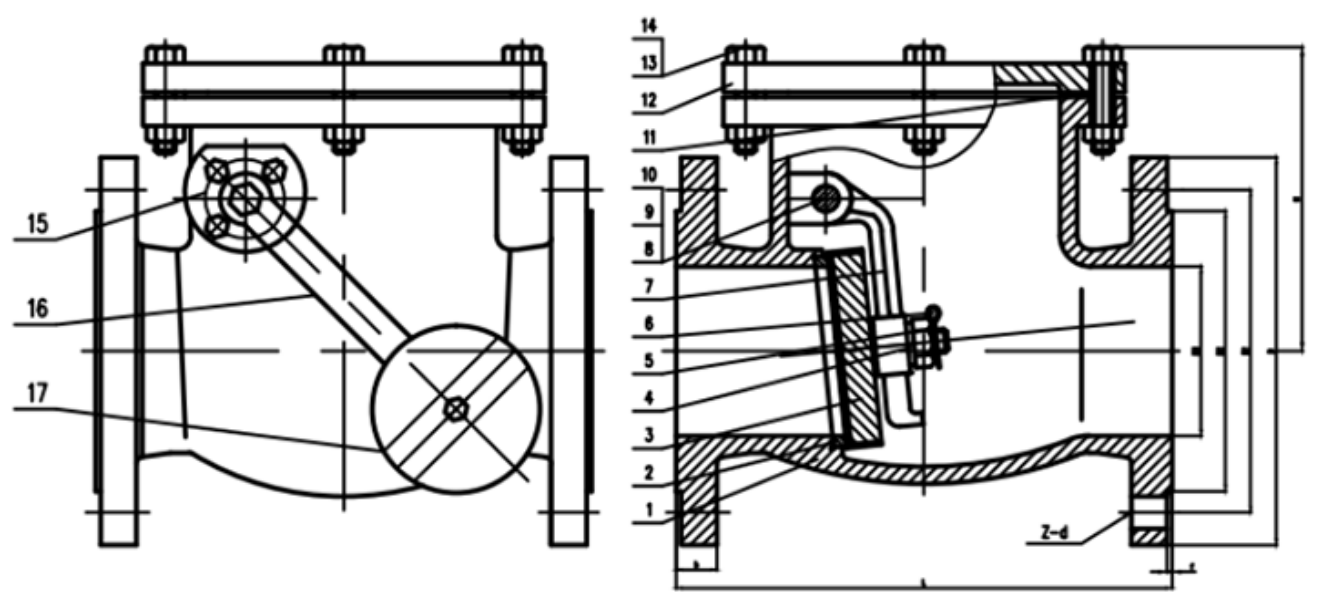
Product Identification:

Swing check valve is dependent on the flow of the medium itself and automatically open and close, It is prevent the backflow of the medium , also known as check valve,one way valve, reflux valve,backpressure vale.

Product Advantages:

- 1. QT450-10 valve body, level 3 Spheroidization rate, tensile strength over 450Mpa, elongation over 10%. not easy to crack or freeze.
- 2.250μm thickness epoxy coating. It is prevent corrode and rust.
- 3.Heavy type valve body.
- 4.Cr13 seat, better wear-resisting and sealing performance.
- 5.Each valve will be inspected for shell and seal pressure before leaving factory.

Parameters



Parameter Information :				
Executive standard :				
Name		Face to face length	Pressure Test	
Reference standard		DIN 3202	DIN EN 1092-2	DIN EN 12266
Material of Main Parts:				

Name	1-Body	3-Disc	2-Seat	17-Counter Weight
Material	DI	DI	Brass/SS/Rubber	DI

Dimensions :							
SIZE							
DN	NPS	L	φD	φD1	φD2	b	Z-d
40	1 1/2"	180	150	110	84	18	4-19
50	2"	200	165	125	99	20	4-19
65	2 1/2"	240	185	145	118	20	4-19
80	3"	260	200	160	132	22	8-19
100	4"	300	220	180	156	24	8-19
125	5"	350	250	210	184	26	8-19
150	6"	400	285	240	211	26	8-23
200	8"	500	340	295	266	30	12-23
250	10"	600	405	355	319	32	12-28
300	12"	700	460	410	370	32	12-28
350	14"	800	520	470	429	36	16-28
400	16"	900	580	525	480	38	16-31



Ductile Iron Ball Check Valve

Size Range: DN50-DN400

Pressure: 125LB/150LB

Body Materials: DI

Cover materials: DI

Introduction

FEATURES

Applicable medium : Water

Suitable temperature : 0 ~ 80°C

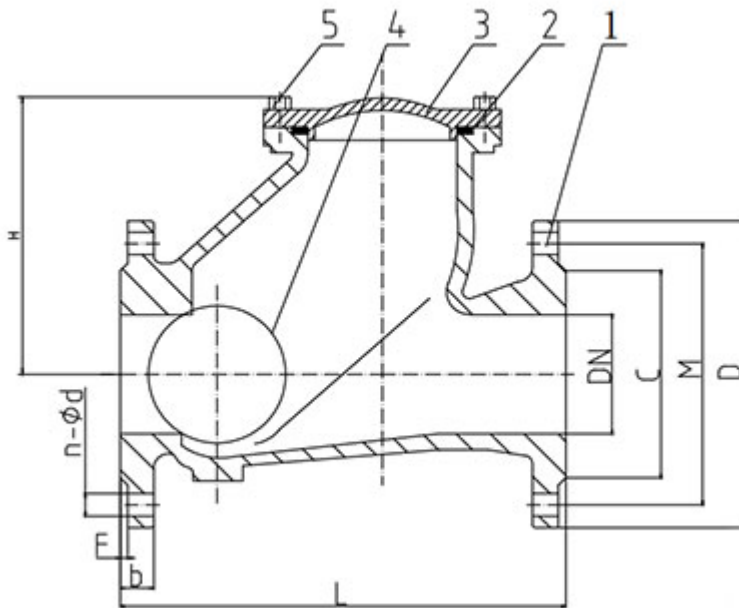
Application field : Municipal construction, water conservancy engineering, water supply and drainage, water treatment, etc.

Product advantages :

1. The spheroidizing rate of valve body is grade 3, the tensile strength is 450MPa, and the elongation is greater than 10%

2. The valve body is solid and heavy, and the wall thickness reaches the standard
3. The ball is covered with EPDM, the rubber content meets the standard, and the material is guaranteed
4. Using stainless steel bolts, It has high strength and strong corrosion resistance
5. Each valve needs to be tested for casing and sealed double-layer pressure according to the standards before leaving the factory.

Parameters



Valve Implementation Standards :

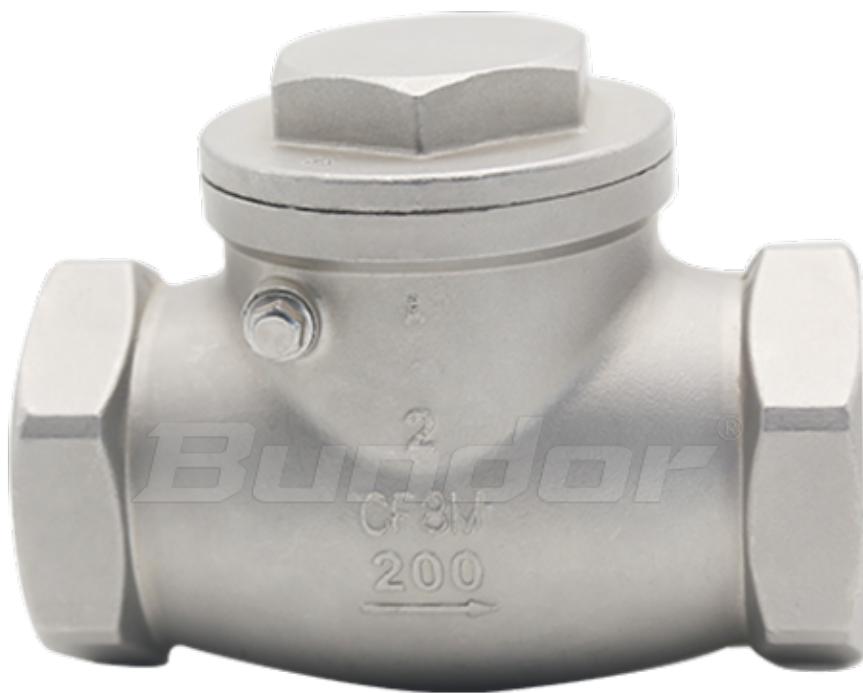
Name	Design and Manufacture	Structure Length	Inspection and Pressure Test Standard	Flange Connection
Reference Standard	AWWA C508	ASME B16.10	AWWA C508	AWWA C508

Main Parts Information :

Name	Body	Ring	Cover	Ball	Bolt
Material and Description	DI	NBR	DI	2-6"Carbon steel+EPDM 8-16"Ductile iron+EPDM	Stainless Steel

Nominal Size Information :

DN	NPS (inch)	L	D	M	n-d
50	2"	203	152	120.5	4-19
65	2 1/2"	216	178	139.5	4-19
80	3"	241	191	152.5	4-19
100	4"	292	229	190.5	8-19
150	6"	356	279	241.5	8-22
200	8"	495	343	298.5	8-22
250	10"	622	406	362	12-25
300	12"	698	483	432	12-25
350	14"	787	533	476	12-29
400	16"	914	597	539.5	16-29



Thread swing check valve

Size Range: DN15-DN100

Pressure: PN16

Body Materials: CF8/CF8M/CF3M

Introduction

FEATURES

Working temperature : -29°C ~ 180°C

Suitable medium : Water, steam, oil, etc

Application : Municipal construction,electricity, water supply and drainage,water treatment,oil

Product Identification:

Swing check valve refers to a valve that automatically opens and closes the valve clack depending on the flow of the medium itself to prevent the medium from flowing back.

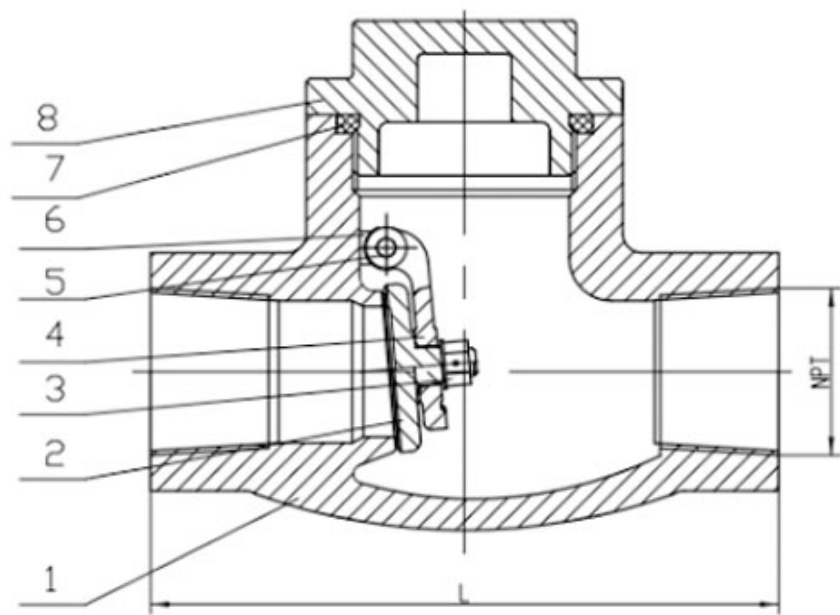
The structure is swing type, except for the gasket and sealing ring used in the middle flange, there is no

leakage point as a whole, which reduces the possibility of leakage of the valve. It has been used in many fields such as water supply, chemical industry, metallurgy, pharmacy and so on.

Product Advantages:

- 1. The main material meets the requirements of national regulations
- 2. All valve accessories are processed by CNC machine tools to ensure product accuracy;
- 3. After pressure test, the valve will be cleaned again, the anti-rust oil is sprayed.It is easier for long term storage. The cleanliness of the inner cavity meets the requirements of JB/T7748.
- 4. Each valve must be tested pressure as per national standards when leaving the factory, unqualified products will not be delivered.
- 5. Each valve adopts special thread blocking protection to prevent thread damage during transportation;
- 6. G thread, NPT thread, BSP and other customized threads can be provided according to customer needs.

Parameters



Parameter Information :

1. Executive standard :

Name	Design and manufacture	Standard of pressure test
Executive standard	GB/T 12236	GB/T 13927

2. Material of Main Parts:

Name	1-Body	2-Disc	4-Joystick	7-Sealling	8-Gasket
------	--------	--------	------------	------------	----------

Material	CF8	CF8	CF8	PTFE	CF8
----------	-----	-----	-----	------	-----

3. Dimensions :

Size	PN16	
DN	NPT	L
15	1/2"	63
20	3/4"	75
25	1"	84
32	1 1/4"	100
40	1 1/2"	115
50	2"	135
65	2 1/2"	160
80	3"	187
100	4"	240



Ductile Iron Tilting Check Valve with Counterweight & Hydraulic Damper

Size Range: DN100-DN2000

Pressure: PN10/16

Body Materials: Ductile Iron QT450

Seat Materials: EPDM

Introduction

Features:

Applicable medium : Water,Oil, etc

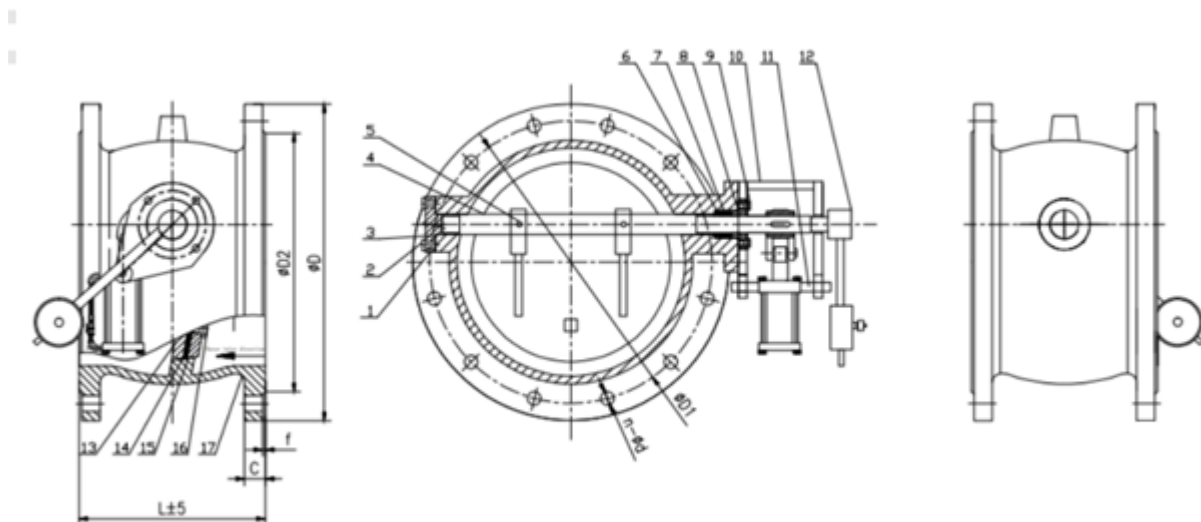
Suitable temperature : 0°C ~ 80°C

Application field : Water treatment, municipal construction, drainage, power plant, etc

Product advantages:

1. QT450-10 or WCB valve body,the chemical composition and mechanical properties meet the the national standard, material report can be provided;
- 2.All parts are processed by precision CNC machine tools to ensure product accuracy;
- 3.Excellent performance of slow closing system, not affected by the medium in the pipeline. The valve disc closes quickly first and then slowly closes to prevent destructive water hammer;
4. Rubber seals or stainless steel hard seals, smooth opening and closing, no vibration, no noise, valve discs and other parts can also be selected according to working conditions;
- 5.Valve shaft is supported by self-lubricating sleeve bearings to reduce friction and torque;
- 6.250μm thickness Akzo epoxy coating;
- 7.Each valve will be inspected for shell and seal pressure before leaving factory.

Parameters



Parameter Information :

1. Executive standard :

Name	Design and manufacture	Face to face Length	End Flange	Pressure Test
Reference standard	GB/T 12238	GB/T 12221	GB/T 17241.6	GB/T 13927

2. Material of Main Parts:

Name	17-Body	13-Disc	4-Stem	14-Seat
Material	QT450-10	QT450-10	2Cr13	EPDM

3.Dimensions :

Size			PN10	
DN	NPT	L	D1	n-d
100	4"	190	180	8-φ19
125	5"	200	210	8-φ19
150	6"	210	240	8-φ23
200	8"	230	295	8-φ23
250	10"	250	350	12-φ23
300	12"	270	400	12-φ23
350	14"	290	460	16-φ23
400	16"	310	515	16-φ28
450	18"	330	565	20-φ28
500	20"	350	620	20-φ28
600	24"	390	725	20-φ31
700	28"	430	840	24-φ31
800	32"	470	950	24-φ34
900	36"	510	1050	28-φ34
1000	40"	550	1160	28-φ37
1200	48"	630	1380	32-φ40
1400	56"	710	1590	36-φ43
1600	64"	790	1820	40-φ49
1800	72"	870	2020	44-φ49
2000	80"	950	2230	48-φ49

По вопросам продаж и поддержки обращайтесь:

Алматы (7273)495-231
Архангельск (8182)63-90-72
Астрахань (8512)99-46-04
Барнаул (3852)73-04-60
Белгород (4722)40-23-64
Брянск (4832)59-03-52
Владивосток (423)249-28-31
Волгоград (844)278-03-48
Вологда (8172)26-41-59
Воронеж (473)204-51-73
Екатеринбург (343)384-55-89
Иваново (4932)77-34-06
Ижевск (3412)26-03-58
Иркутск (395)279-98-46
Россия (495)268-04-70

Казань (843)206-01-48
Калининград (4012)72-03-81
Калуга (4842)92-23-67
Кемерово (3842)65-04-62
Киров (8332)68-02-04
Краснодар (861)203-40-90
Красноярск (391)204-63-61
Курск (4712)77-13-04
Липецк (4742)52-20-81
Магнитогорск (3519)55-03-13
Москва (495)268-04-70
Мурманск (8152)59-64-93
Набережные Челны (8552)20-53-41
Нижний Новгород (831)429-08-12
Киргизия (996)312-96-26-47

Новокузнецк (3843)20-46-81
Новосибирск (383)227-86-73
Омск (3812)21-46-40
Орел (4862)44-53-42
Оренбург (3532)37-68-04
Пенза (8412)22-31-16
Пермь (342)205-81-47
Ростов-на-Дону (863)308-18-15
Рязань (4912)46-61-64
Самара (846)206-03-16
Санкт-Петербург (812)309-46-40
Саратов (845)249-38-78
Севастополь (8692)22-31-93
Симферополь (3652)67-13-56
Казахстан (7172)727-132

Смоленск (4812)29-41-54
Сочи (862)225-72-31
Ставрополь (8652)20-65-13
Сургут (3462)77-98-35
Тверь (4822)63-31-35
Томск (3822)98-41-53
Тула (4872)74-02-29
Тюмень (3452)66-21-18
Ульяновск (8422)24-23-59
Уфа (347)229-48-12
Хабаровск (4212)92-98-04
Челябинск (351)202-03-61
Череповец (8202)49-02-64
Ярославль (4852)69-52-93