

# Технические характеристики

## По вопросам продаж и поддержки обращайтесь:

Алматы (7273)495-231  
Архангельск (8182)63-90-72  
Астрахань (8512)99-46-04  
Барнаул (3852)73-04-60  
Белгород (4722)40-23-64  
Брянск (4832)59-03-52  
Владивосток (423)249-28-31  
Волгоград (844)278-03-48  
Вологда (8172)26-41-59  
Воронеж (473)204-51-73  
Екатеринбург (343)384-55-89  
Иваново (4932)77-34-06  
Ижевск (3412)26-03-58  
Иркутск (395)279-98-46  
Россия (495)268-04-70

Казань (843)206-01-48  
Калининград (4012)72-03-81  
Калуга (4842)92-23-67  
Кемерово (3842)65-04-62  
Киров (8332)68-02-04  
Краснодар (861)203-40-90  
Красноярск (391)204-63-61  
Курск (4712)77-13-04  
Липецк (4742)52-20-81  
Магнитогорск (3519)55-03-13  
Москва (495)268-04-70  
Мурманск (8152)59-64-93  
Набережные Челны (8552)20-53-41  
Нижний Новгород (831)429-08-12  
Киргизия (996)312-96-26-47

Новокузнецк (3843)20-46-81  
Новосибирск (383)227-86-73  
Омск (3812)21-46-40  
Орел (4862)44-53-42  
Оренбург (3532)37-68-04  
Пенза (8412)22-31-16  
Пермь (342)205-81-47  
Ростов-на-Дону (863)308-18-15  
Рязань (4912)46-61-64  
Самара (846)206-03-16  
Санкт-Петербург (812)309-46-40  
Саратов (845)249-38-78  
Севастополь (8692)22-31-93  
Симферополь (3652)67-13-56  
Казахстан (7172)727-132

Смоленск (4812)29-41-54  
Сочи (862)225-72-31  
Ставрополь (8652)20-65-13  
Сургут (3462)77-98-35  
Тверь (4822)63-31-35  
Томск (3822)98-41-53  
Тула (4872)74-02-29  
Тюмень (3452)66-21-18  
Ульяновск (8422)24-23-59  
Уфа (347)229-48-12  
Хабаровск (4212)92-98-04  
Челябинск (351)202-03-61  
Череповец (8202)49-02-64  
Ярославль (4852)69-52-93



# Flange Type Globe Valve

Size Range: 1/2"-12"/DN15-300

Pressure: 1-1.6Mpa

Body Materials: Bonnet: Grey iron, Ductile iron

Seat Materials: Cr stainless steel

Disc Materials: Grey iron, Ductile iron

Stem Materials: Carbon steel, Stainless steel

## Introduction

---

### Deetailed

The product is suitable for liquid, gas medium pipeline and equipment, and is used to connect and cut off the medium in the pipeline.

The sealing surface has the advantages of good sealing performance, easy operation, no damage to the sealing surface, long service life and no water hammer phenomenon.

Can be installed in any position of the pipeline, but the flow direction by pointing to the installation.

Clockwise turn of hand wheel means the closing of valve, otherwise it means opening, do not allow assistant lever to the hand wheel.

Valve body, Bonnet: Grey iron, Ductile iron

Stem : Carbon steel, Stainless steel

Disc: Grey iron, Ductile iron

Applicable Temperature:  $\leq 200^{\circ}\text{C}$

Applicable Medium: water, Oil, Gas and corrosive medium

Main Material: Cast iron, brass, carbon, chrome-plated

### **Adoptive Standards**

Body Test: 1.5 times the working pressure with water. This test is performed after valve assembly and with disc in half position open, it is called as a body hydro test.

Seat Test: 1.1 times the working pressure with water.

Function / Operation Test: At the time of final inspection, each valve and its actuator (Flow-Control Lever / Gear / Pneumatic Actuator), under goes a complete operating test (Open/Close). This test carried out without pressure and at ambient temperature. It ensures the correct operation of the valve / actuator assembly with accessories such as solenoid valve, limit switches, air filter regulator etc.

Special Test: On request, any other test can be carried out according to special instruction by client.

### **Product Advantage**

1.The sealing surface has the advantages of good sealing performance, easy operation, no damage to the sealing surface, long service life and no water hammer phenomenon.

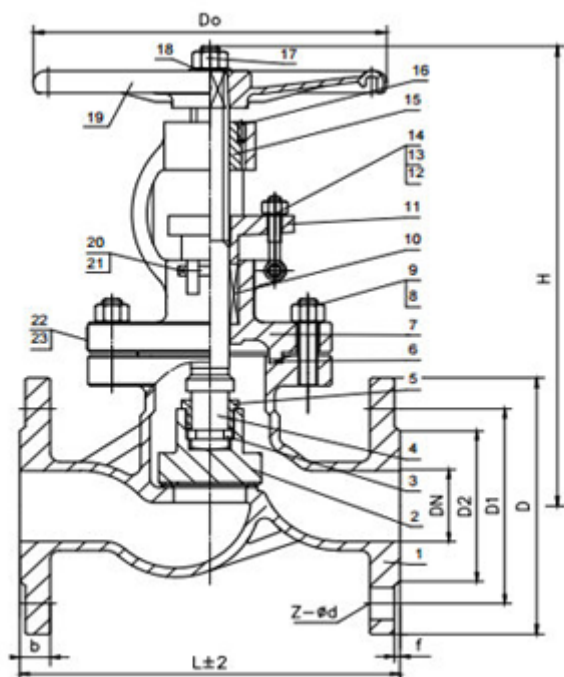
2.The product has reasonable structure, reliable sealing, excellent performance and beautiful appearance.

3.Stem after the modulation and surface nit riding treatment, has a good corrosion resistance and abrasion resistance.

4.The product can be used with standard pipe flanges and flange sealing surface in the form, to meet the needs of various projects and user requirements.

## **Parameters**

---



<b>PN(Mpa)</b>	1.6
<b>Applicable Temperature</b>	≤200°C
<b>Applicable Medium</b>	Water, Oil, Gas and corrosive medium
<b>Main Material</b>	Cast iron, brass, carbon chrome-plated)

DN(mm)	L	D	D1	H	D0	Weight(kg)
15	130	95	65	105-125	73	4.25
20	150	105	75	105-125	73	4.7
25	160	115	85	115-135	95	5.85
32	180	135	100	120-140	95	9.2
40	200	145	110	140-165	125	11.35
50	230	160	125	160-185	125	16.6
65	290	180	145	196-220	170	20.3
80	310	195	160	285-330	217	30
100	350	215	180	305-360	260	40
125	400	245	210	367-396	280	56
150	480	280	240	431-465	320	80
200	600	335	295	513-562	400	122
250	650	405	355	577-635	400	179



# Cast Steel Globe Valve

Size Range: 1/2"-12"/DN15-300

Pressure: 1-2.5Mpa

Body Materials: WCB

Seat Materials: Cr stainless steel

Disc Materials: 304/316stainless steel

Stem Materials: 304/316stainless steel

## Introduction

---

### Product introduction

Flange connected valve applicable to nominal pressure PN1.6~PN4.0Mpa, roommate working temperature -29~425 DEG C, chemical, pharmaceutical, chemical fertilizer, the power industry and condition of the pipeline, cut off or connected to medium, suitable for water, oil, steam, acid medium, and the operation mode: manual, gear, electric, pneumatic, etc.

### Adoptive Standards

Body Test: 1.5 times the working pressure with water. This test is performed after valve assembly and with disc in half position open, it is called as a body hydro test.

Seat Test: 1.1 times the working pressure with water.

Function / Operation Test: At the time of final inspection, each valve and its actuator (Flow-Control Lever / Gear / Pneumatic Actuator), under goes a complete operating test (Open/Close). This test carried out without pressure and at ambient temperature. It ensures the correct operation of the valve / actuator assembly with accessories such as solenoid valve, limit switches, air filter regulator etc.

Special Test: On request, any other test can be carried out according to special instruction by client.

**Product Advantage**

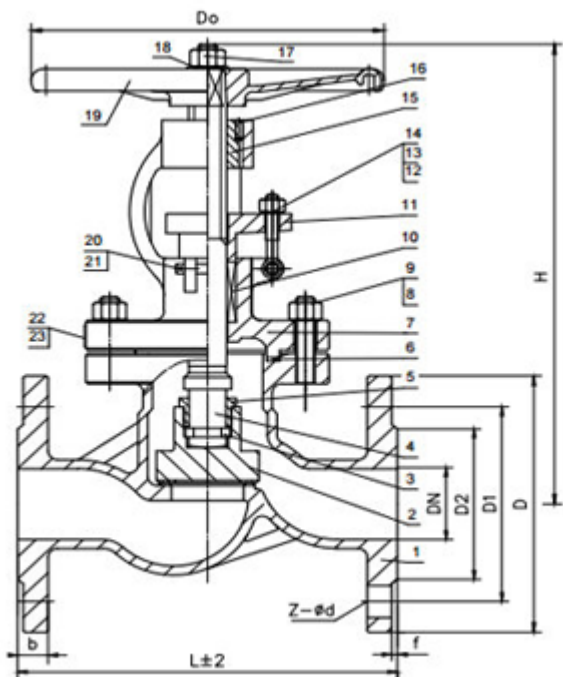
- 1.The sealing surface has the advantages of good sealing performance, easy operation, no damage to the sealing surface, long service life and no water hammer phenomenon.
- 2.The product has reasonable structure, reliable sealing, excellent performance and beautiful appearance.
- 3.Stem after the modulation and surface nit riding treatment, has a good corrosion resistance and abrasion resistance.
- 4.The product can be used with standard pipe flanges and flange sealing surface in the form, to meet the needs of various projects and user requirements.

**Standard Test**

Valve design and manufacture according to GB/T12237-1989

Valve test according to GB/T13927-1992

Parameters



PN(Mpa)	Connection Flange	Pressure test		Temperature
		Shell	Seal	≤425

1.6	RF	2.4	1.76
2.5	RF	3.75	2.75
4	RF	6	4.4

Part Name	Body, Bonnet, Y oke	Disc	Stem	Seat	Sealing Ring, G asket	Packing
Material	WCB ZG1Cr18Ni9Ti ZG1Cr18Ni12Mo 2Ti ZGCr5Mo	2Cr13 304 306 Cr5Mo	2Cr13 304 316 25Cr2MoV	25 304 316	304 coated	Flexible Graphite



# Bellows Globe Valve

Size Range: DN15-DN400

Pressure: PN16/25/40

Body Materials: WCB/CF8

Disc Materials: A105+13Cr/CF8

Stem Materials: 2Cr13/304

## Introduction

---

### Features:

Working temperature : -29°C ~ 425°C

Suitable medium : Water,Oil,Gas etc.

Application : Municipal construction, Power, Medicine, Petroleum industry

### Product Identification:

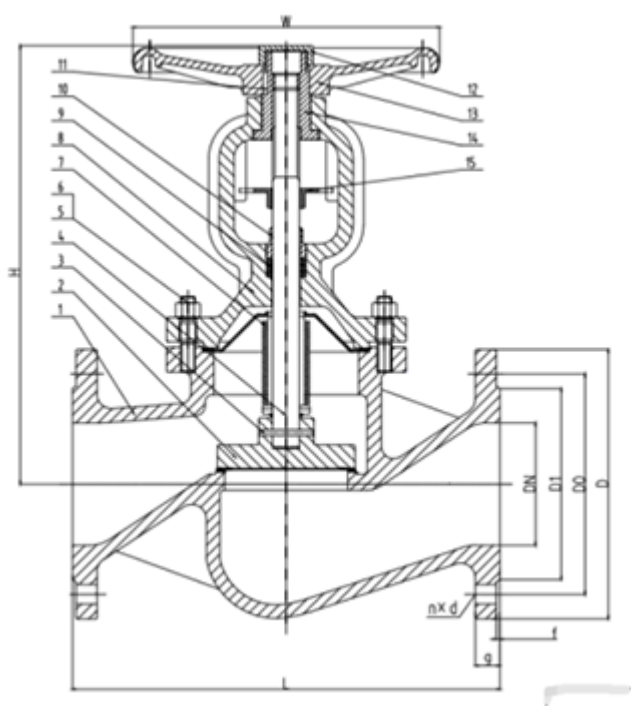
Bellows globe valve also called bellows seal globe valve. Through automatic roll welding, a metal barrier is formed between the fluid medium and the atmosphere to ensure the stem is designed for zero leakage.

The inner parts of bellows globe valve adopts bellows structure and the lower end of the stainless steel bellows is welded to the stem to prevent the fluid eroding the stem. The other end is placed between the valve body and the valve cover to form a static seal. The double sealing design will avoid leakage if the bellows fails and the stem packing will also avoid leakage. The bellows is welded to the valve stem to maintain stable operating performance and avoid valve stem vibration caused by valve plug vibration. It is most suitable for pipelines with steam, flammable, explosive, heat transfer oil, high purity, toxic and other media.

**Product Advantages:**

- 1. Precision casting valve body. Qualified material. Fine appearance, no sand hole.
- 2. The inner part is processed by CNC lathe. Twice polish will ensure sealing performance.
- 3. Heavy type body.
- 4. Cr13 seat, better wear-resisting and sealing performance.
- 5. Between cover and stem contact surface with inverted seal treatment to avoid leakage.
- 6. SS304 Bellows.
- 7. Each valve will be tested shell and sealing as per related standard before leaving factory.

Parameters



Parameter Information :
Executive standard :

Name	Design	Face to face length	Pressure Test	
Reference standard	DIN EN 13709	DIN EN 558-1	DIN EN 1092-1	DIN EN 12266
Material of Main Parts:				
Name	1-Body	2-Disc	3-Shaft	7-Bellows
Material	WCB/CF8	A105+13Cr/CF8	2Cr13/304	304

Dimension :							
SIZE							
DN	NPS	L	φD	φD0	φD1	g	n*d
15	1/2"	130	95	65	45	16	4*14
20	3/4"	150	105	75	58	18	4*14
25	1"	160	115	85	68	18	4*14
32	1 1/4"	180	140	100	78	18	4*18
40	1 1/2"	200	150	110	88	18	4*18
50	2"	230	165	125	102	18	4*18
65	2 1/2"	290	185	145	122	18	4*18
80	3"	310	200	160	138	20	8*18
100	4"	350	220	180	158	20	8*18
125	5"	400	250	210	188	22	8*18
150	6"	480	285	240	212	22	8*22
200	8"	600	340	295	268	24	12*22
250	10"	730	405	355	320	26	12*26
300	12"	850	460	410	378	28	12*26
350	14"	980	520	470	428	30	16*26
400	16"	1100	580	525	490	32	16*30



# Stainless Steel Globe Valve

Size Range: DN50-DN300

Pressure: PN16/150LB

Body Materials: SS304

Seat Materials: stainless steel / alloy steel

Disc Materials: CF3/ CF3M/CF8/CF8M

Stem Materials: 2Cr13/ 304/316

## Introduction

---

### Features:

Working temperature : 0-325°C

Suitable medium : Water, weak corrosive medium, etc.

Application : Water treatment, petrochemical, food and medicine, electric energy, metallurgy, etc.

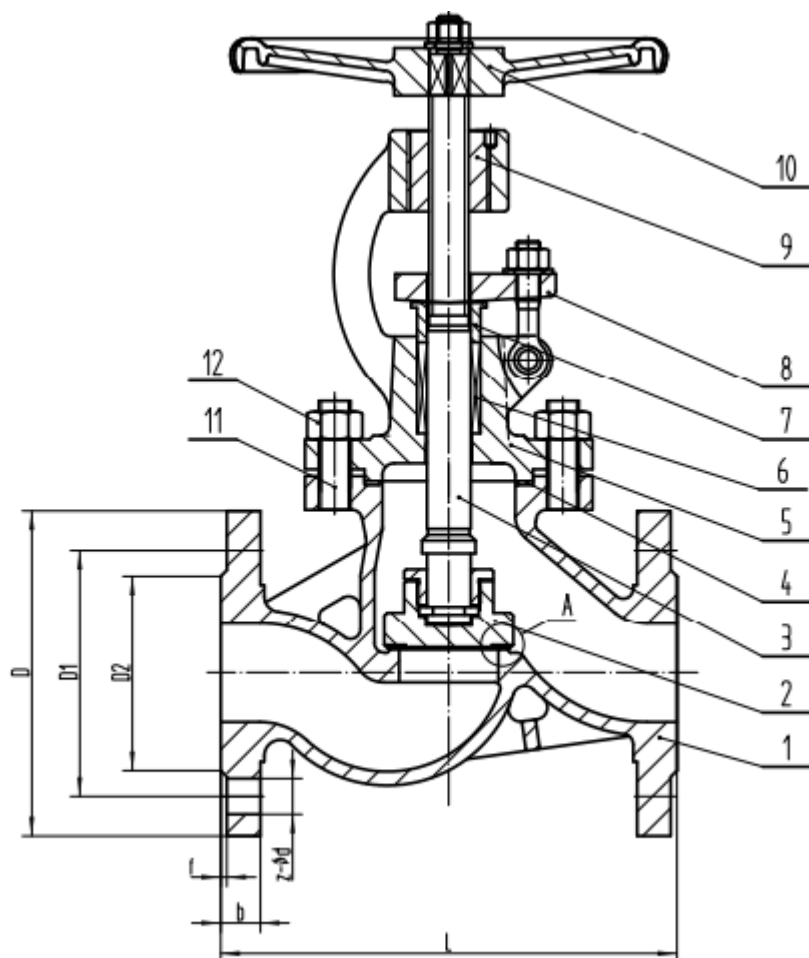
## Product Identification:

The axis of the valve stem is perpendicular to the sealing surface of the valve seat, the stem is opened or closed very fast, which makes the valve is very suitable for cutting off or regulating the medium; The valve body is 304, 316 etc. It widely used in chemical, shipping, medicine, food machinery and other industries.

## Product Advantages:

1. Precision casting valve body, 2 shot blasting treatment, smooth appearance, no trachoma.
2. CNC lathe processing of internal parts
3. Heavy type valve body.
4. Inverted seal treatment of contact surface between bonnet and stem to avoid leakage.
5. Each valve body is pickled and passivated to make the casting uniform and bright and improve corrosion resistance
6. Each valve will be inspected for shell and seal pressure before leaving factory.

## Parameters



Optional	Body	Seat Seal	Disc	Stem	Actuator	Pressure
----------	------	-----------	------	------	----------	----------

CF3/ CF3M/CF8/ CF8M	stainless steel / alloy steel	CF3/ CF3M/CF8/C F8M	2Cr13/ 304/316	Handwheel/ Bevel Gear/ Motorized/ Pneumatic	PN16/PN25 /PN40/150LB
---------------------------	-------------------------------------	---------------------------	-------------------	--	--------------------------

Name	Design and manufacture	Face to face Length	Pressure Test	Connection Flange
Reference Standard	GB/T 12235 ANSI B16.34	GB/T 12221 ASME B16.10	GB/T 13927 API 598	JB/T 79 ASME B16.5

Name	Body	Disc	Stem	Seat Seal	Handwheel
Material	304	304	304	304	DI

Size		PN16				150LB			
DN	NPS ( inch )	L	D	D1	Z-φd	L	D	D1	Z-φd
50	2"	230	160	125	4-18	203	152	120.5	4-19
65	2 1/2"	290	180	145	4-18	216	178	139.5	4-19
80	3"	310	195	160	8-18	241	190	152.5	4-19
100	4"	350	215	180	8-18	292	229	190.5	8-19
125	5"	400	245	210	8-18	356	254	216	8-22
150	6"	480	280	240	8-22	406	279	241.5	8-22
200	8"	600	335	295	12-22	495	343	298.5	8-22
250	10"	650	405	355	12-26	622	406	362	12-25
300	12"	750	460	410	12-26	698	483	432	12-25



# Stainless steel thread B type globe valve

Size Range: DN15-DN50

Pressure: PN16

Body Materials: CF8

Stem Materials: 304

## Introduction

---

### Features:

Working temperature : -20°C ~ 180°C

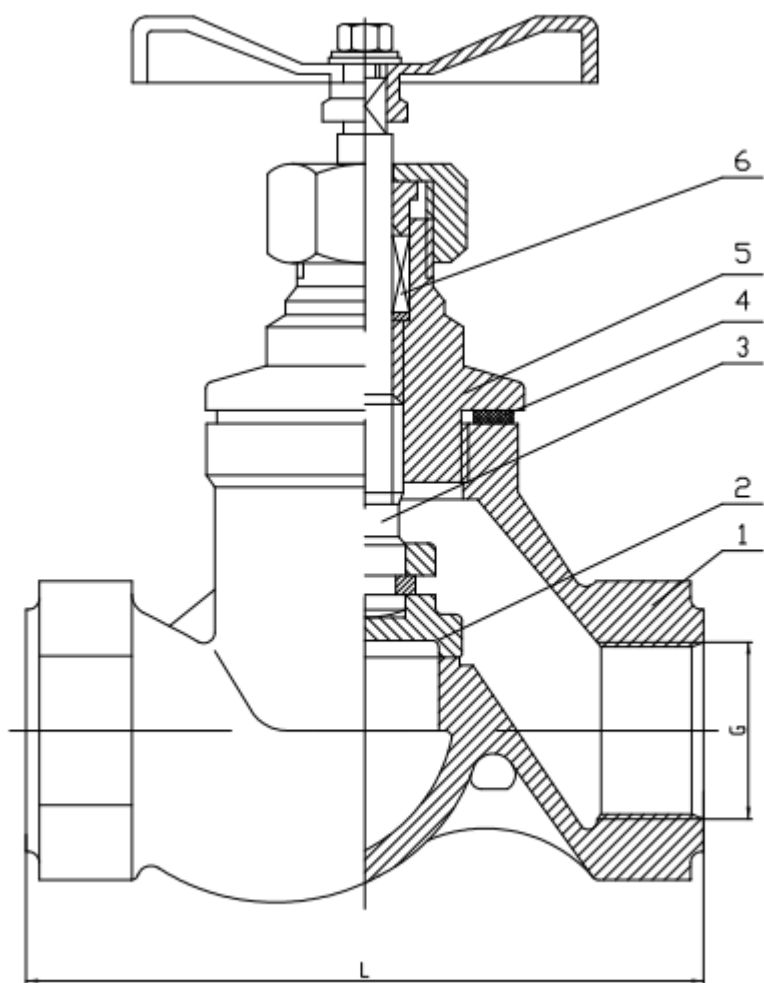
Suitable medium : Water, oil, gas etc.

Application : Water treatment, Petrochemical, food , electric energy,etc.

### Product Advantages:

- 1. The material meets the national standard.
- 2. All valve body and parts are processed by CNC machines to make sure processing accuracy.
- 3. After pressure test, each valve is sprayed with anti-rust oil to ensure long-term storage of the valve, and the cleanliness of the inner cavity reaches the JB/T7748 standard;
- 4. Each valve is tested pressure as per national standards.
- 5. Each valve use waterline blocking protection to avoid the damage of connecting surface during transportation.
- 6. G thread, NPT thread, BSP and other customized thread can be provided according to customer needs.

Parameters



Executive standard :

Name	Design and manufacture	Pressure Test
Reference standard	GB/T 12235	GB/T 13927

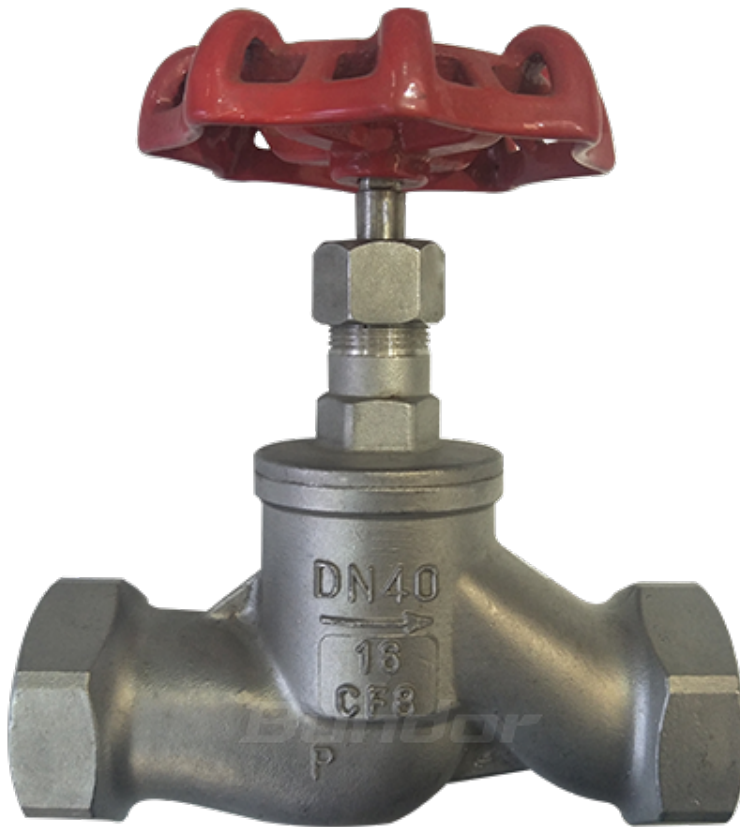
Material of Main Parts:

Name	1-Body	2-Disc	3-Stem	4-Gasket	5-Bonnet
------	--------	--------	--------	----------	----------

Material	CF8	CF8	304	PTFE	CF8
----------	-----	-----	-----	------	-----

Dimensions :

Size	B type	
DN	G	L
15	1/2"	64
20	3/4"	74
25	1"	84
32	1 1/4"	102
40	1 1/2"	113
50	2"	132



# Stainless steel thread S type globe valve

Size Range: DN15-DN50

Pressure: PN16

Body Materials: CF8

Stem Materials: 304

## Introduction

---

### Features:

Working temperature : -20°C ~ 180°C

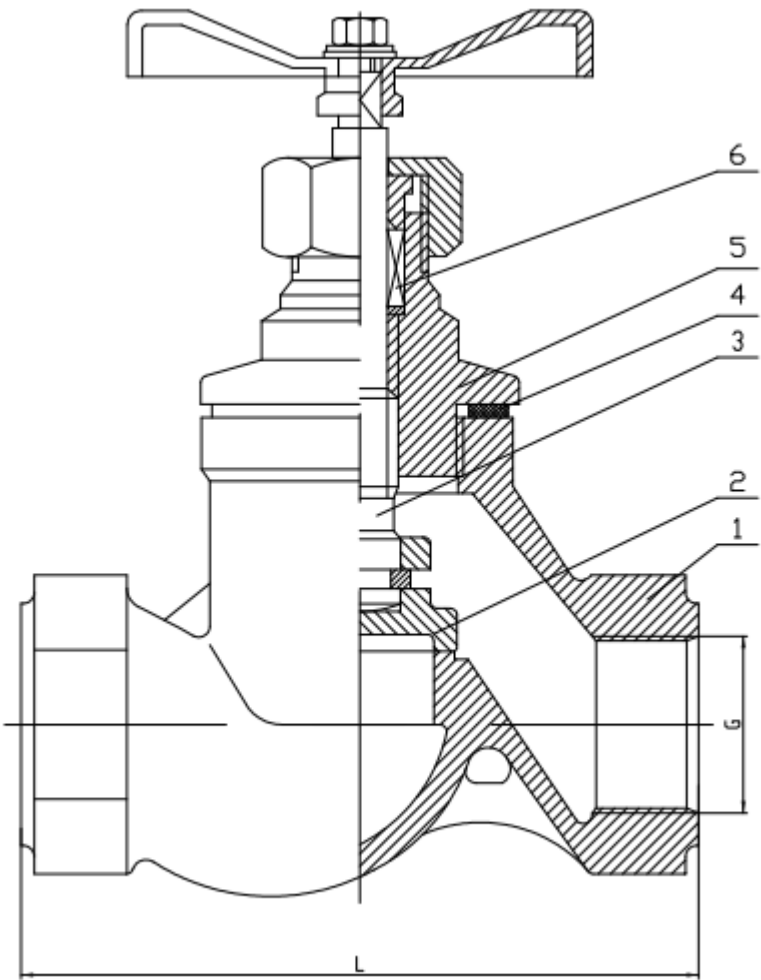
Suitable medium : water,oil,gas etc.

Application : Water treatment,Petrochemical, food , electric energy,etc.

**Product Advantages:**

- 1. The material meets the national standard.
- 2. All valve body and parts are processed by CNC machines to make sure processing accuracy.
- 3. After pressure test, each valve is sprayed with anti-rust oil to ensure long-term storage of the valve, and the cleanliness of the inner cavity reaches the JB/T7748 standard;
- 4. Each valve is tested pressure as per national standards.
- 5. Each valve use waterline blocking protection to avoid the damage of connecting surface during transportation.
- 6. G thread, NPT thread, BSP and other customized thread can be provided according to customer needs.

**Parameters**



Name	Design and manufacture	Pressure Test
Reference standard	GB/T 12235	GB/T 13927

Name	1-Body	2-Disc	3-Stem	4-Gasket	5-Bonnet
Material	CF8	CF8	304	PTFE	CF8

Size	S type	
DN	G	L
15	1/2"	82
20	3/4"	91
25	1"	109
32	1 1/4"	126
40	1 1/2"	127
50	2"	179

**По вопросам продаж и поддержки обращайтесь:**

Алматы (7273)495-231  
Архангельск (8182)63-90-72  
Астрахань (8512)99-46-04  
Барнаул (3852)73-04-60  
Белгород (4722)40-23-64  
Брянск (4832)59-03-52  
Владивосток (423)249-28-31  
Волгоград (844)278-03-48  
Вологда (8172)26-41-59  
Воронеж (473)204-51-73  
Екатеринбург (343)384-55-89  
Иваново (4932)77-34-06  
Ижевск (3412)26-03-58  
Иркутск (395)279-98-46  
Россия (495)268-04-70

Казань (843)206-01-48  
Калининград (4012)72-03-81  
Калуга (4842)92-23-67  
Кемерово (3842)65-04-62  
Киров (8332)68-02-04  
Краснодар (861)203-40-90  
Красноярск (391)204-63-61  
Курск (4712)77-13-04  
Липецк (4742)52-20-81  
Магнитогорск (3519)55-03-13  
Москва (495)268-04-70  
Мурманск (8152)59-64-93  
Набережные Челны (8552)20-53-41  
Нижний Новгород (831)429-08-12  
Киргизия (996)312-96-26-47

Новокузнецк (3843)20-46-81  
Новосибирск (383)227-86-73  
Омск (3812)21-46-40  
Орел (4862)44-53-42  
Оренбург (3532)37-68-04  
Пенза (8412)22-31-16  
Пермь (342)205-81-47  
Ростов-на-Дону (863)308-18-15  
Рязань (4912)46-61-64  
Самара (846)206-03-16  
Санкт-Петербург (812)309-46-40  
Саратов (845)249-38-78  
Севастополь (8692)22-31-93  
Симферополь (3652)67-13-56  
Казахстан (7172)727-132

Смоленск (4812)29-41-54  
Сочи (862)225-72-31  
Ставрополь (8652)20-65-13  
Сургут (3462)77-98-35  
Тверь (4822)63-31-35  
Томск (3822)98-41-53  
Тула (4872)74-02-29  
Тюмень (3452)66-21-18  
Ульяновск (8422)24-23-59  
Уфа (347)229-48-12  
Хабаровск (4212)92-98-04  
Челябинск (351)202-03-61  
Череповец (8202)49-02-64  
Ярославль (4852)69-52-93